

Live in North Somerset?

Want to contribute to local conservation?

Join the



# North Somerset Bat Survey



**UWE**  
**Bristol** | University  
of the  
West of  
England



## Who are we?

The North Somerset Bat Survey is part of the South West Wildlife Monitoring Project, which is led by the University of the West of England's Bat Conservation Research Lab. We are working in partnership with North Somerset Council to gather spatial distribution data on bats across North Somerset to enable sustainable development.

## Why is this important?

Bats play a crucial role in maintaining our natural ecosystems, particularly through controlling insect populations. North Somerset provides a variety of key habitats for many UK bat species. However, urban development threatens all the UK's 18 bat species through habitat loss and fragmentation, resulting in serious declines in bat populations.

With a growing human population, it is difficult to find a balance between conserving nature and providing space for humans.

Over the next 15 years, North Somerset Council need to build over 20,000 new homes across North Somerset. This means many of our natural green spaces, and therefore local bats and wildlife, are at risk of being lost. Working with the council, you can help us collect vital data to inform the council where to best develop to minimise the ecological impacts of new developments.



Photo credit: Emma Stone

**We will provide you with all the tools and knowledge you'll need to conduct robust, scientific research that contributes to conservation in your area!**

<https://batconservationresearchlab.co.uk/north-somerset-bat-survey/>

Email: [northsomersetbats@uwe.ac.uk](mailto:northsomersetbats@uwe.ac.uk)

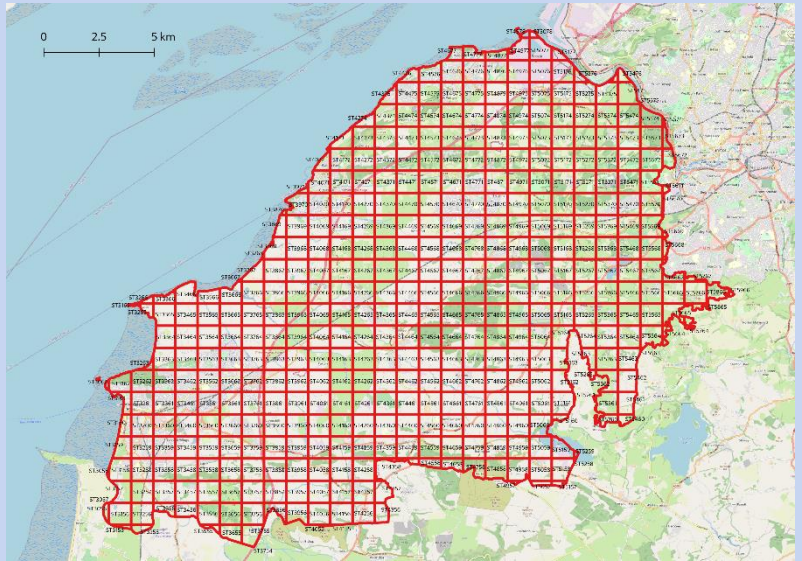




## How it works

We are a citizen science project, meaning that we rely on people like you to conduct bat monitoring surveys, no experience required!

We have divided North Somerset County into 1-km survey squares, which can be reserved by volunteers. You can then borrow a bat detector kit from one of our Detector Hosting Centres and visit your 1-km square. You'll need to set up your detector in your chosen location and leave it to record North Somerset's bats for six nights!



Data is uploaded via the BTO's Acoustic Pipeline, a cutting-edge sound identification tool, which will analyse your recordings and send you the results!

The most useful data comes from studies over several years, therefore we ask that you consider becoming a long-term volunteer for the North Somerset Bat Survey.



## Get involved

First, you'll need to sign up and reserve a 1-km survey square at:

<https://batconservationresearchlab.co.uk/north-somerset-bat-survey/>

Once you've done this you will receive a confirmation email containing a link to our online booking system. Here you can book an 8 day/7 night timeslot (allowing for 6 survey nights and 1 night to upload data) and arrange to pick up and drop off your kit from one of our Detector Hosting Centres.

**Please note** - the survey season lasts until the end of October, so be quick to sign up to avoid disappointment!



Photo credit: David Savory

## Contact us

For more information or to sign up please visit our website at:

<https://batconservationresearchlab.co.uk/north-somerset-bat-survey/>

For queries, email [northsomersetbats@uwe.ac.uk](mailto:northsomersetbats@uwe.ac.uk)

