

North Somerset Bat Survey

Information for Detector Hosting Centres

The North Somerset Bat Survey is part of the South West Wildlife Monitoring Project and run by the University of the West of England's Bat Conservation Research Lab.

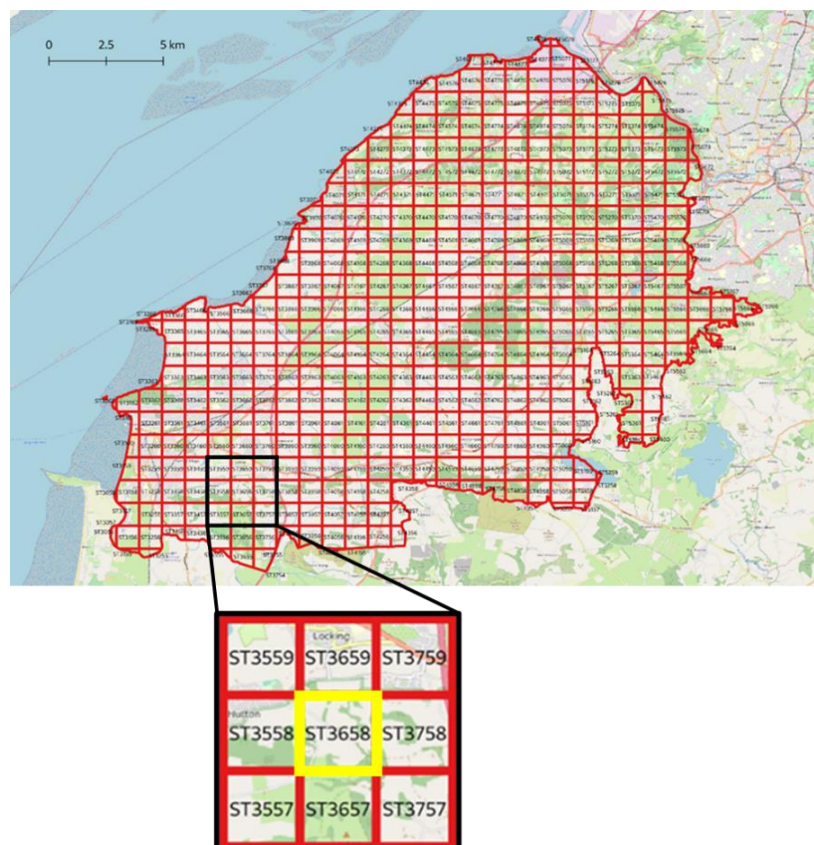
Aims

- Gather data on and better understand the status, spatial distribution and timing of activity of the different bat species in North Somerset using robust surveying methods.
- Engage and inform the community about local wildlife and encourage active involvement in conservation.
- Identify key sites and routes used by different bat species in North Somerset and monitor temporal and spatial changes.
- Inform North Somerset Council of key areas to conserve regarding minimising bat habitat loss and fragmentation, allowing for sustainable urban development across the county.

How it works

North Somerset Bat Survey is a Citizen Science Project meaning monitoring will be conducted by volunteers within the community, requiring no previous experience. This is a great way to connect individuals with nature and allow people to make an important contribution to conservation, whilst developing great skills.

On our website, people will be able to book one of these 1km-squares to survey (e.g., ST3658):



They can then hire one of our bat detector kits, which will be available for pick up from a Detector Hosting Centre of their choice. Time slots are for 8 days/7 nights, meaning volunteers are required to monitor one site for 6 consecutive nights. The bat detector kits will become available again on the day after its return (e.g., available on Monday after being returned on Sunday). Once all monitoring has been completed, volunteers will upload their recordings to the BTO Acoustic Pipeline, where the data will be automatically analysed and sent to us. This data will show us which species have been recorded, as well as where, what time and how much the area is used by bats.

Bookings are managed by the BTO and can be made online. Once a booking has been made the Detector Hosting Centre will be notified via an automatic email, providing the contact details of who has booked the kit and when. Centres will also be sent a reminder email a couple of days before volunteers are due to pick the kit up.

Role of the Detector Hosting Centre

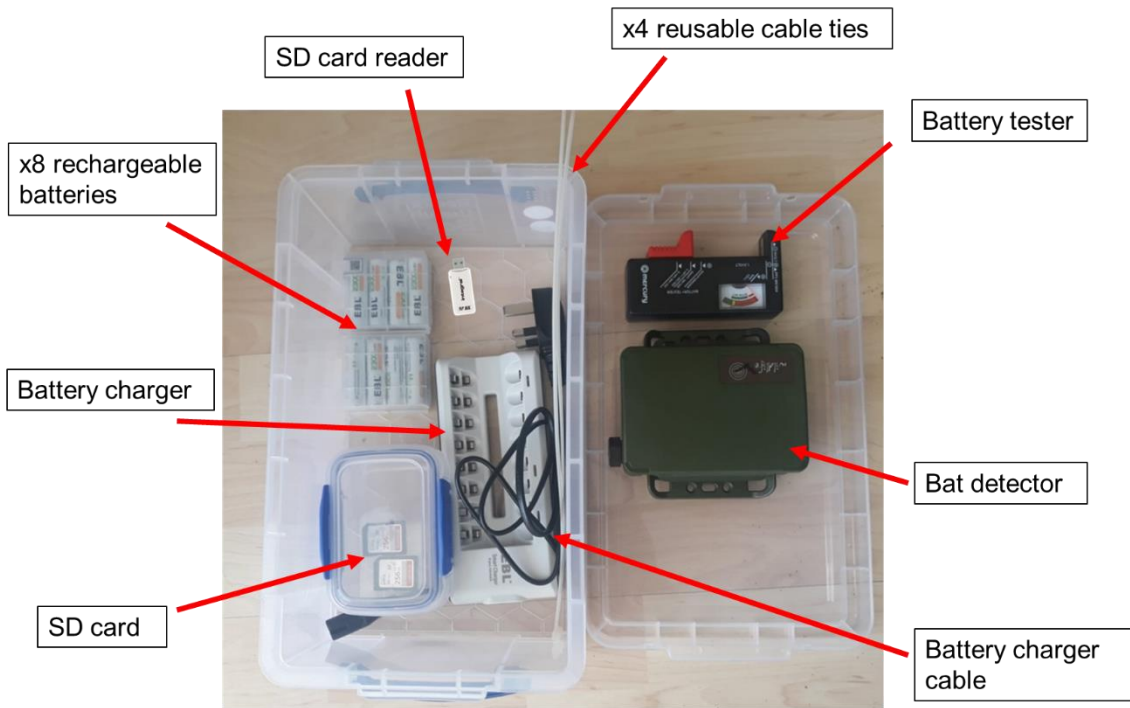
The kits will contain all the information required for volunteers meaning Detector Hosting Centres are not expected to explain how the equipment works. The kits are stored in 5L boxes with the dimensions: D:34cm x W:20cm x H:12.5cm.

The main role of the monitoring centre is to provide a place for people to pick up and drop off their hired detector kits. To make sure the process is efficient, we also ask that you:

- Make sure that whoever is hiring the kit signs it in and out. A form will be provided and can also be printed out from our [Resources](#) webpage.
- Check that all the equipment in the kit has been returned after each booking (please use the equipment list below to help).

Detector kit contents

- Song Meter Mini Bat detector
- Battery charger
- Battery charger cable
- Small box containing:
 - 1x SD card
- 8x rechargeable AA batteries
- 1x SD card reader
- 1x battery tester
- 4x reusable cable ties
- Troubleshooting Guide
- Quick Start Guide



Questions?

Please feel free to visit our [website](#) or contact our Project Officer, Beth Gerrard:

Email: Beth.Gerrard@uwe.ac.uk

Mobile: 07896652690

Office hours:

Monday & Tuesday: 08:30-17:30

Wednesday: 09:00-11:30